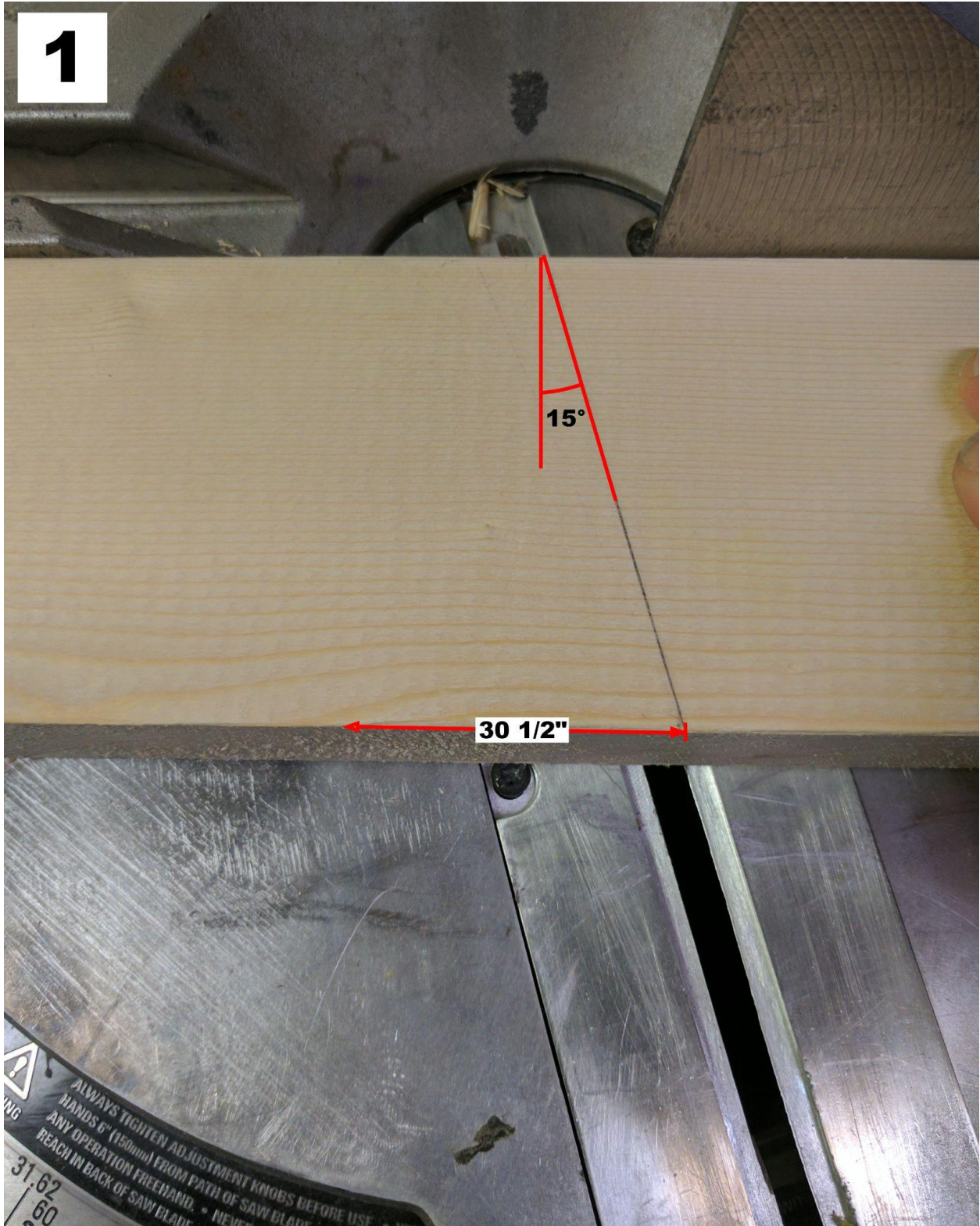


1

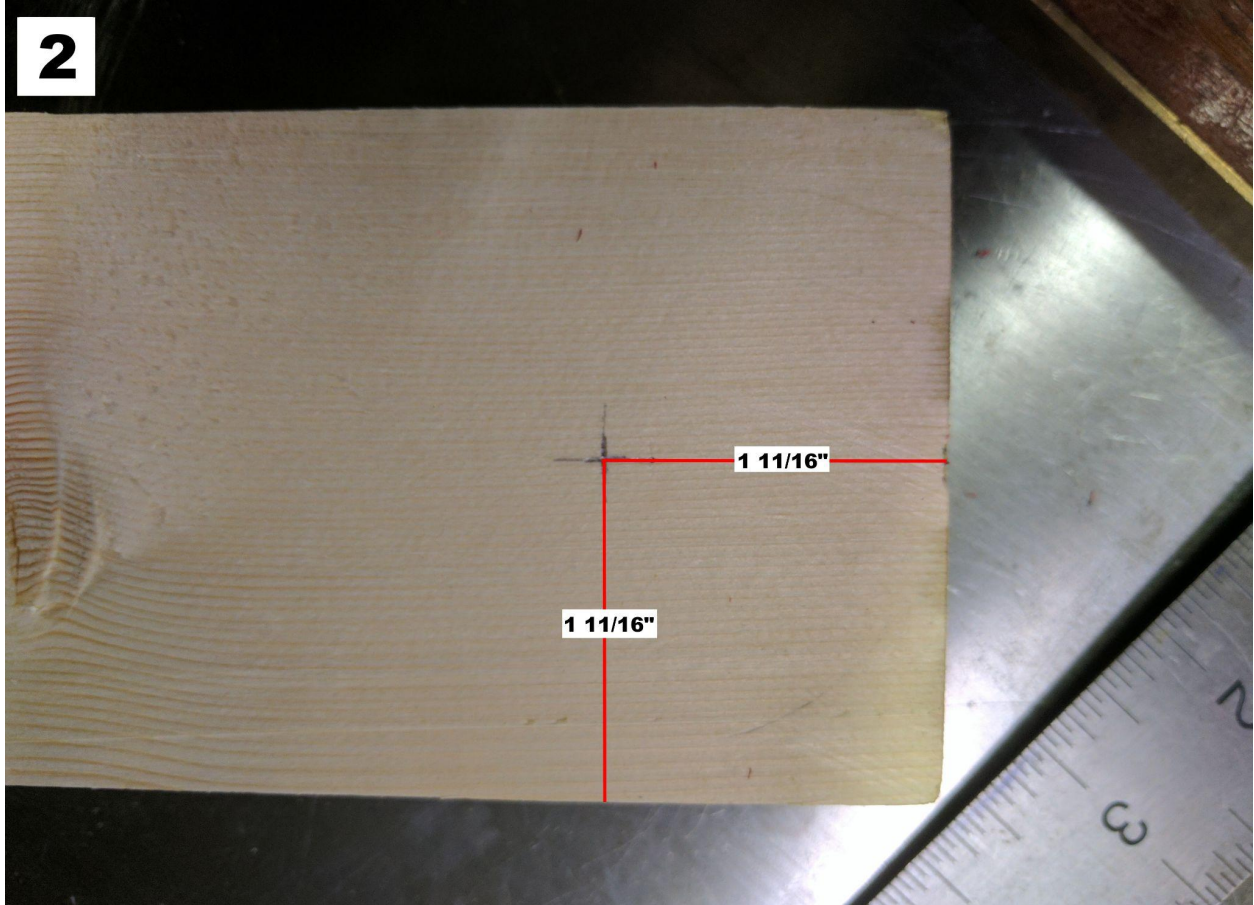


15°

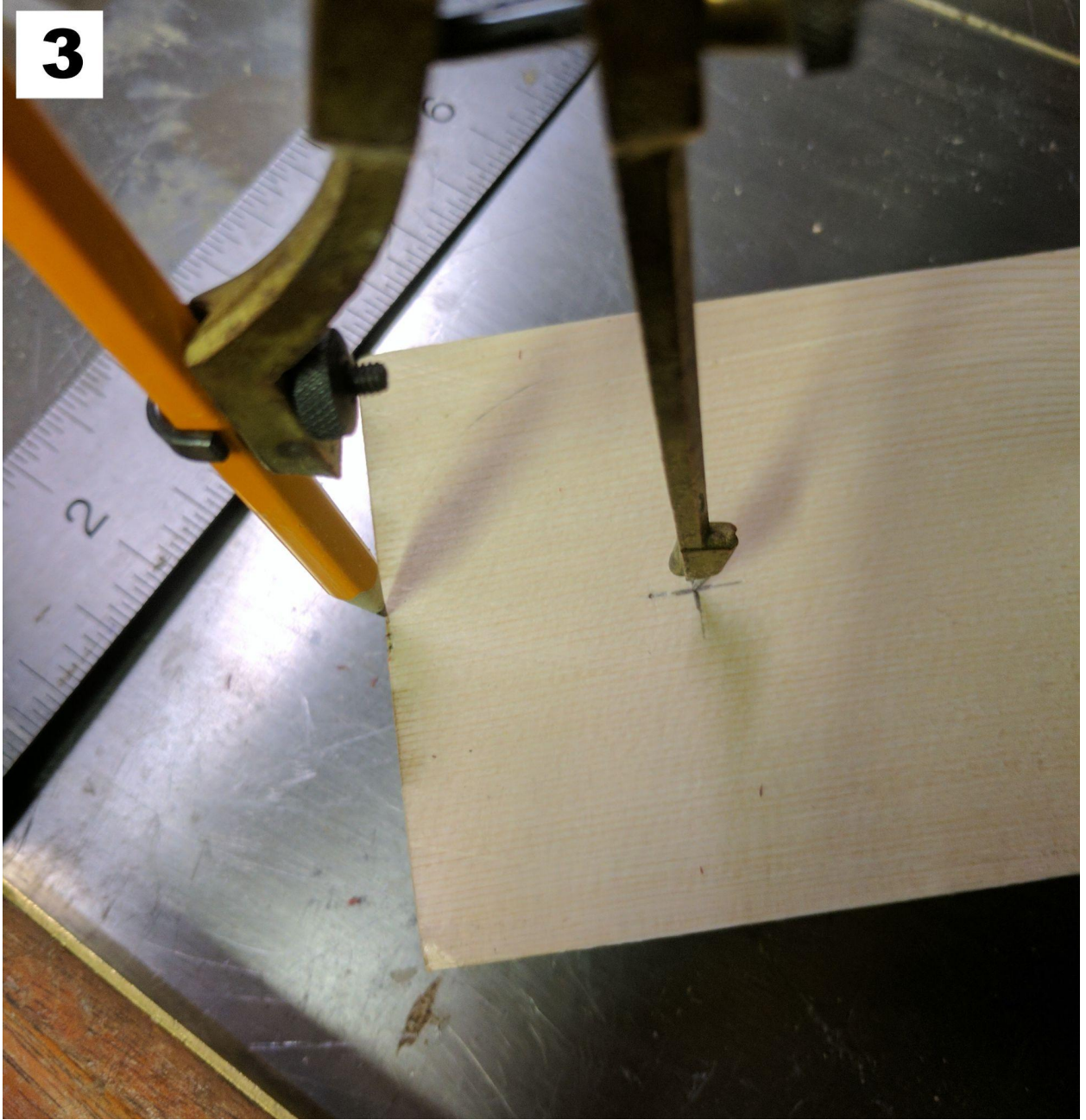
30 1/2"

ALWAYS TIGHTEN ADJUSTMENT KNOBS BEFORE USE
HANDS 6" (150mm) FROM PATH OF SAW BLADE
ANY OPERATION FREEHAND. • NEVER
REACH IN BACK OF SAW BLADE
31.62
60

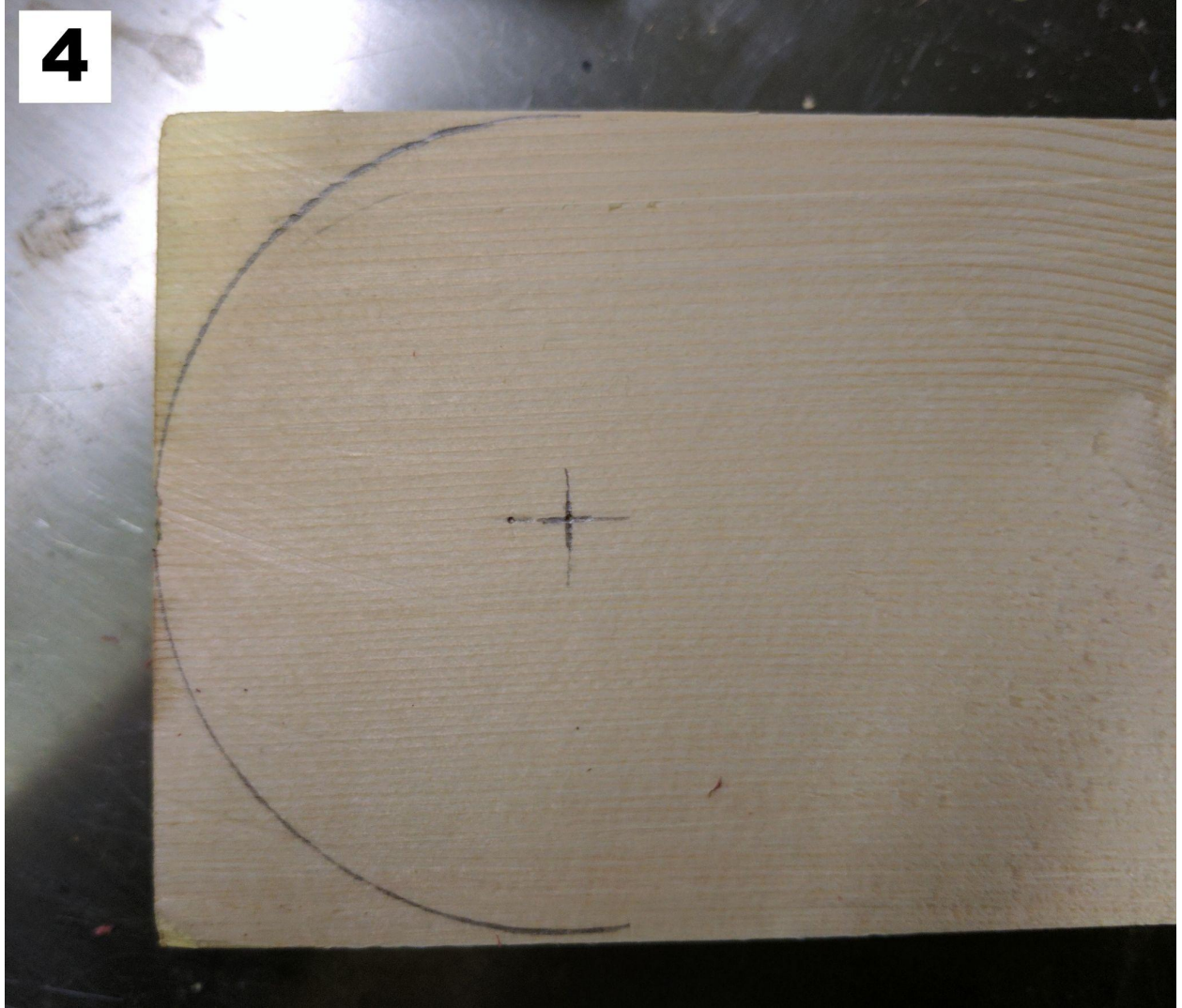
2



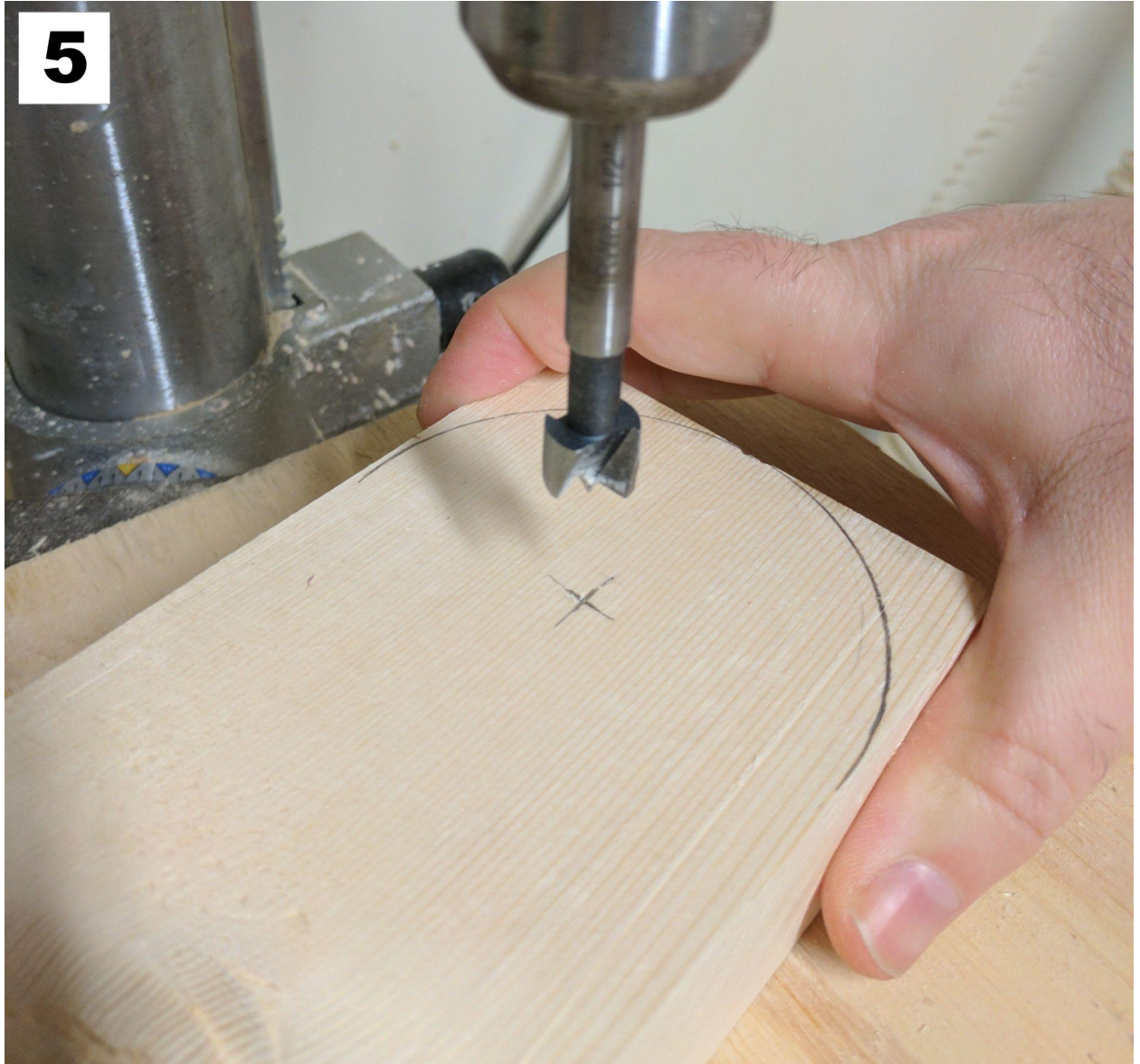
3



4



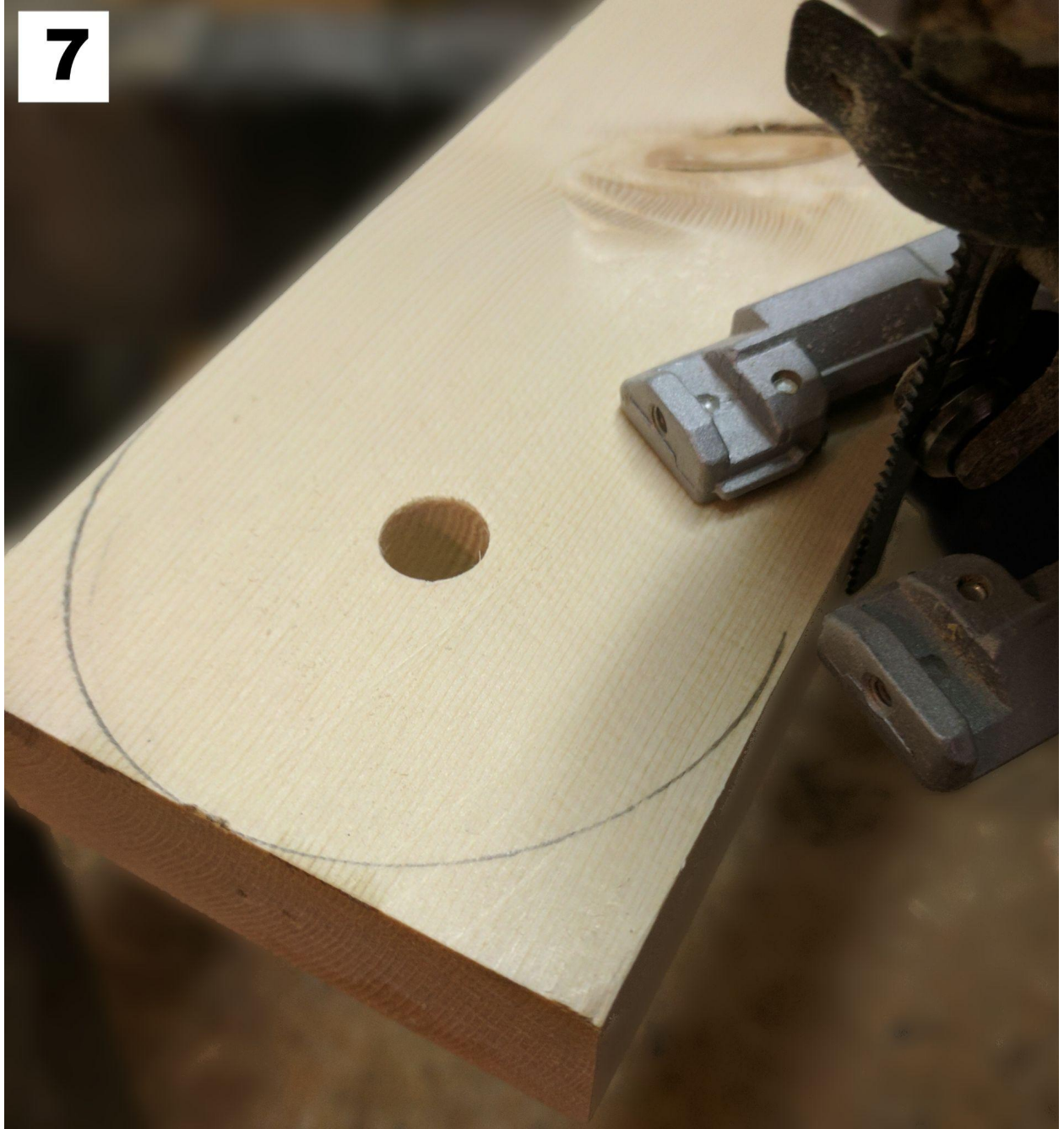
5



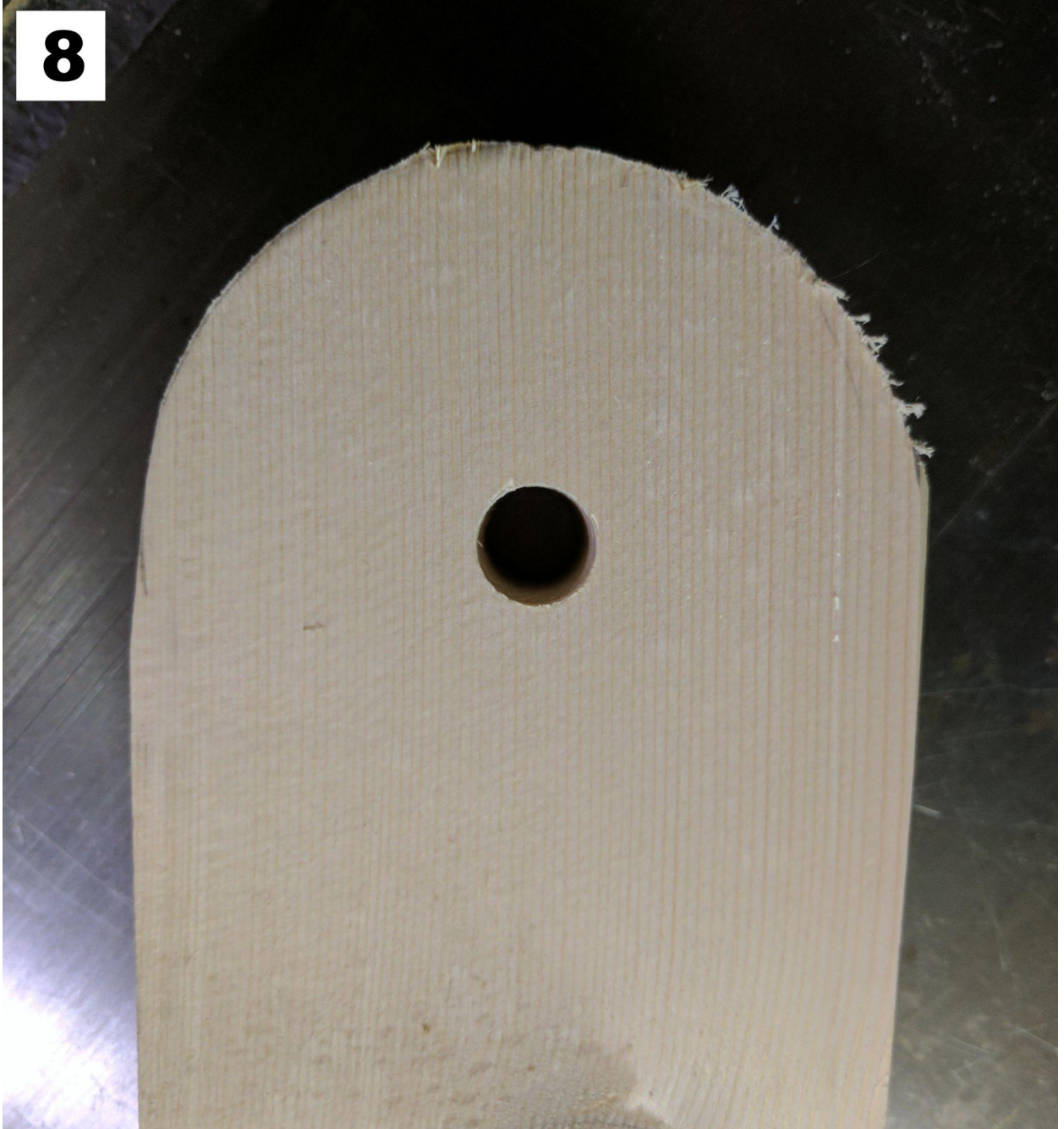
6



7



8



9



10

